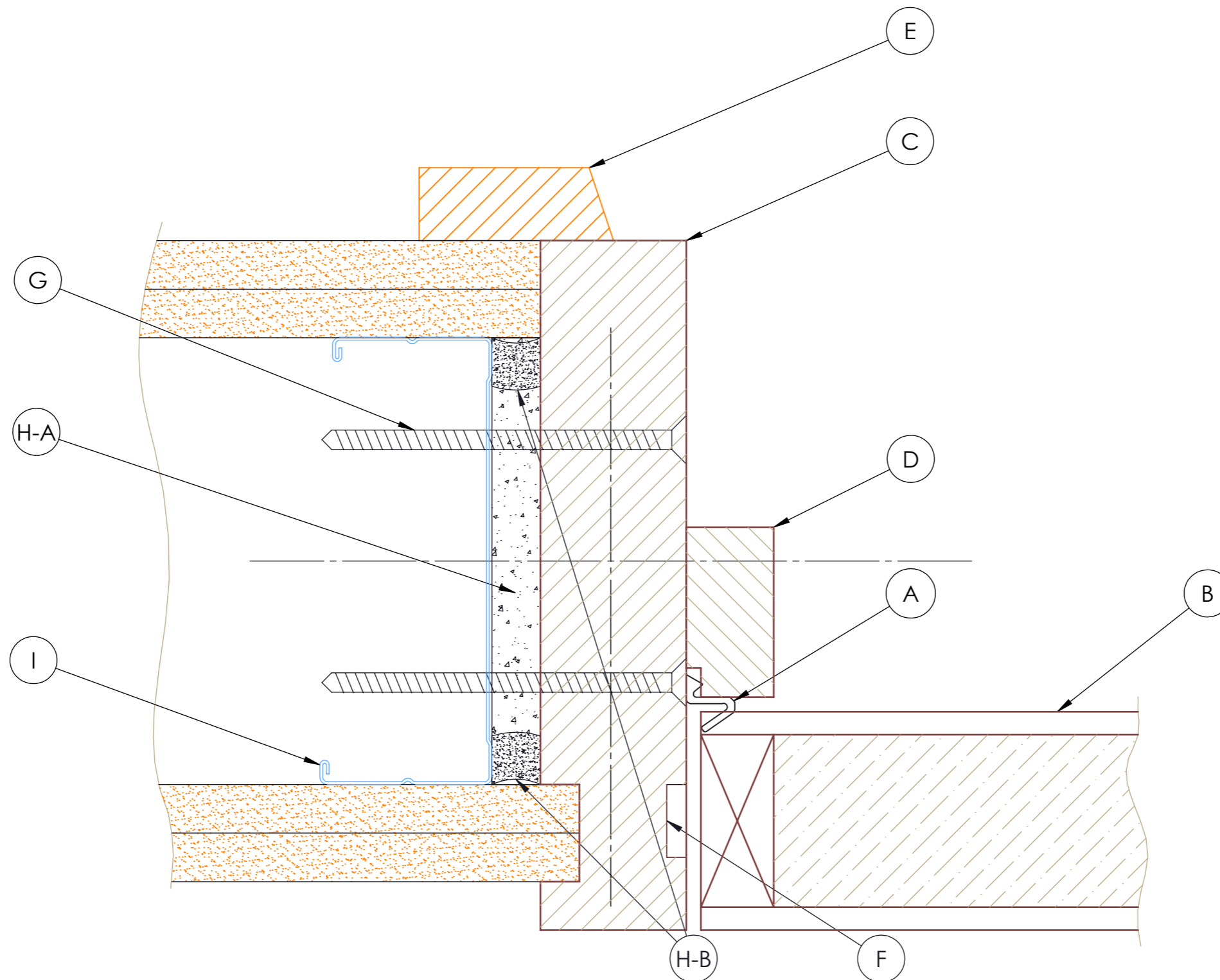



HDJ-P45-21B



A	SQ21
B	45mm FUTURA DOOR
C	TIMBER JAMB (30 or 42 mm)
D	TIMBER DOOR STOP (35 X 18R)
E	TIMBER ARCHITRAVE - MUST OVERLAP WALL STRUCTURE BY 5mm MINIMUM
F	FIRE SEALS
G	STAINLESS STEEL SCREWS @ 400mm CENTRES, MINIMUM 40mm PENETRATION INTO WALL STRUCTURE
H	MAX. 10mm FITTING GAP TO BE FILLED WITH: H-A PR EXPANDING FOAM (E.G. SIKA BOOM) AND H-B INTUMESCENT MATERIAL (E.G. BOSS MASTIC) TO FILL FITTING VOID
I	STEEL STUD

CORE	FUTURA
FRR	-/30/30 sm
STUD	STEEL
JAMB "J"	J1D-35
WALL TYPE EXAMPLES	GBSL30b

Title: Door Jamb	Date: 16/12/2020	Drawn By: HM	
Drawing No: HDJ-P45-21B	Revision: 1.0	Checked By: HM	
		Sheet No: 1 / 1	Size: A3

©Hallmark Group. For the installation of Hallmark doors only. Ph: 03 313 4754